

802.11n Wireless ADSL 2/2+ Router

Anchor Data Systems (NI) Ltd

Tel: 028 9074 0315 www.AnchorData.co.uk

enquiries@AnchorData.co.uk



The PLANET ADN-4100 is a Wireless ADSL 2/2+ Router compliant with 802.11n and features 1T1R MIMO antenna technology. The ADN-4100 is the ideal solution for office and residential users to share a high-speed ADSL 2/2+ broadband Internet connection and four-10/100Mbps Fast Ethernet backbone. It can support transmission rates up to 24Mbps downstream and 3.5Mbps upstream. The ADN-4100 supports PPPoA (RFC 2364 - PPP over ATM Adaptation Layer 5), RFC 2684 encapsulation over ATM (bridged or routed), PPP over Ethernet (RFC 2516), and IPoA (RFC1483) to establish a connection with ISP.

With built-in IEEE 802.11b/g and 802.11n wireless network capabilities, the AND-4100 allows any computer and wireless-enabled network device connecting it without additional cabling. New 802.11n wireless capability gives you the highest speed of wireless experience ever. With a compatible wireless card installed in your PC, any file can be transferred and the highest speed can be up to 150Mbps. The radio coverage is also doubled than before, which offers the high speed wireless connection even in a wide space of your office or house.

To secure the wireless communication, the ADN-4100 supports the most up-to-date encryption, WEP, WPA-PSK and WPA2-PSK. In order to simplify the security settings, the ADN-4100 also supports WPS configuration with PBC/PIN type for users connect to a secured wireless network easily.

The ADN-4100 has user-friendly management interfaces so it can be managed by workstations running standard web browsers. It provides DHCP server, NAT, Virtual Server, DMZ, Access Control, IP Filter, PPTP/IPSec pass-through, DDNS, and UPnP capability. Furthermore, for VPN tunnel, it also supports PPTP/ IPsec tunneling. The ADN-4100 serves as an Internet firewall to protect your network from being accessed by unauthorized users. It offers the natural firewall function. (Network Address Translation, NAT) All the incoming and outgoing IPs can be monitored and filtered. For the advanced application, it also can block internal users accessing the Internet services.

KEY FEATURES

INTERNET ACCESS FEATURES

- **Shared Internet Access**

All users in the LAN can access the Internet through the ADN-4100 only using a single external IP Address. The local (invalid) IP Addresses are hidden from external sources. This process is called NAT (Network Address Translation).

- **Built-in ADSL 2/2+ Modem**

ADN-4100 provides ADSL 2/2+ modem service and supports all common ADSL connections.

- **PPPoE, PPPoA, Direct Connection Support**

Various WAN connections are supported by ADN-4100.

- **Fixed or Dynamic IP Address**

On the Internet (WAN port) connection, the ADN-4100 supports both Dynamic IP Address (IP Address is allocated on connection) and Fixed IP Address.

ADVANCED INTERNET FUNCTIONS

- **Virtual Servers**

The feature allows Internet users to access Internet servers on your LAN. The required setup is quick and easy.

- **DMZ Support**

The ADN-4100 can translate public IP addresses to private IP address to allow unrestricted 2-Way communication with Servers or individual users on the Internet. This provides the most flexibility to run programs, which could be incompatible in NAT environment.

- **Firewall**

AND-4100 supports simple firewall with NAT technology and provides options for accessing control from Internet like Telnet, FTP, TFTP, HTTP, and ICMP services. It also supports IP/MAC / Application/URL filtering.

- **Universal Plug and Play (UPnP)**

UPnP allows automatically discovering and configuration of the Broadband Router. UPnP is supported by Windows ME, XP, or later.

- **Dynamic DNS Support**

Base on the Virtual Servers feature, the ADN-4100 allows users connecting aservers to the LAN by using a Domain Name even if you have a dynamic IP address which would change every time of connection.

- **VPN Pass through Support**

PCs with VPN (Virtual Private Networking) software using PPTP, L2TP, and IPSec are transparently supported - no configuration is required.

- **PPTP/ IPSec VPN Support**

It allows mobile users with VPN (Virtual Private Networking) software or branch office network using PPTP, IPSec VPN tunnel to connect to the ADN-4100 for sharing data and information safely.

- **RIP Routing**

It supports RIPv1/2 routing protocol for routing capability.

- **Simple Network Management Protocol (SNMP)**

It is an easy way to manage the router via SNMP.

LAN FEATURES

• **4-Port Switch**

The ADN-4100 incorporates a 4-Port 10/100BaseT switching hub, making it easy to create or extend your LAN.

• **DHCP Server Support**

Dynamic Host Configuration Protocol provides a dynamic IP address to PCs and other devices upon request. The ADN-4100 can act as a DHCP Server for devices on your local LAN and WLAN.

WIRELESS FEATURES

• **Supports IEEE 802.11b, g and 802.11n Wireless Standard**

The 802.11n standard provides backward compatibility with the 802.11b and 802.11g standard, so 802.11b, 802.11g, and 802.11n compliant devices can be used simultaneously.

• **802.11n Technology**

The ADN-4100 provides farther coverage, less dead spaces and higher throughput with 1T1R MIMO technology. The ADN-4100 complies with IEEE 802.11n wireless technology standard and provides data rate up to 150Mbps

• **WEP Support**

WEP (Wired Equivalent Privacy) is included. Key sizes of 64 Bit and 128 Bit are supported.

• **WPS Push Button Control**

The ADN-4100 supports WPS (Wi-Fi Protected Setup) to easily connect to wireless network without configuring the security.

• **WPA-PSK Support**

WPA-PSK_TKIP and WAP-PSK_AES encryption are supported.

• **Wireless MAC Access Control**

The Wireless Access Control feature can check the MAC address (hardware address) of Wireless stations to ensure that only trusted Wireless Stations can access your LAN.

Anchor Data Systems (NI) Ltd

Unit 36 North City Business Centre
Duncairn Gardens, Belfast, BT15 2GG

Tel: 028 9074 0315

www.AnchorData.co.uk

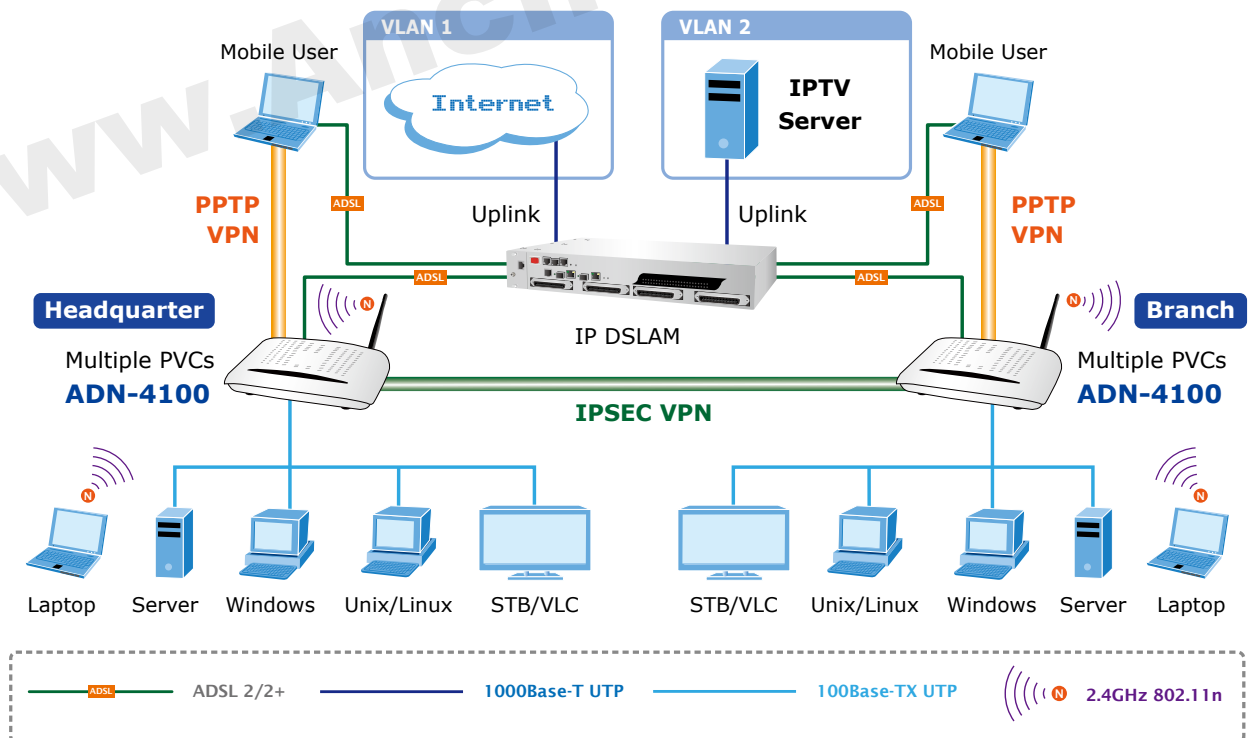
enquiries@AnchorData.co.uk

APPLICATIONS

Internet Connection with Wired/Wireless

The ADN-4100 is a perfect solution for a small group of PCs connecting to high-speed broadband Internet. Multi-users can access the Internet simultaneously. With a built-in 802.11n, capability, the ADN-4100 enables mobile users to access Internet up to 150Mbps high speed.

The ADN-4100 also incorporates a 4-Port 10/100Base-TX switching hub, it makes easily to create or extend your LAN and prevent the attacks from the internet.



SPECIFICATION

Product		802.11n Wireless ADSL 2/2+ Router, Annex A
Model		ADN-4100
Hardware Specification		
Standard		Compliant with ADSL Standard - Full-rate ANSI T1.413 Issue 2 - G.dmt (ITU G.992.1) - G.lite (ITU G.992.2) - G.hs, Multimode (ITU G.994.1) Capable of ADSL2 Standard - G.dmt.bis (ITU G.992.3) Capable of ADSL2+ Standard - G.dmt.bisplus (ITU G.992.5) - Reach Extended ADSL (RE ADSL) - Supports Annex A, B, M, L
Protocol		RFC 2364 - PPP over ATM (LLC/VCMUX) RFC 2516 - PPP over Ethernet (LLC/VCMUX) RFC 1483 - Classic IP over ATM (LLC/VCMUX) RFC 2684 - Bridged IP over ATM (LLC/VCMUX) RFC 2684 - Routed IP over ATM (LLC/VCMUX)
AAL and ATM Support		Supports up to 8 PVCs ATM Forum UNI 3.1/4.0 PVC VC and LLC Multiplexing Integrated ATM AAL5 support(UBR,CBR,VBR-rt, and VBR-nrt) 0~255 VPI plus 1~65535 VCI address range OAM F4 & F5 Segment end-to-end loop-back, AIS, and RDI OAM cells
Ports	LAN	4 x Ethernet (10/100Mbps, Auto-Negotiation, Auto MDI/MDI-X)
	WLAN	1 x 802.11b/g/n Access Point with one 2dBi dipole antennas
	WAN	1 x RJ-11
LED Indicators		PWR, Link, Data, LAN 1~4, WLAN, WPS
Button		WLAN, Reset, WPS, Power
Max. Concurrent Sessions		2048
Wireless Standard		IEEE 802.11b, g and 802.11n
Wireless Frequency		2.4 to 2.4835GHz (Industrial Scientific Medical Band)
Wireless Channels		Maximum 14 Channels, depending on regulatory authorities
Wireless Data Encryption		64 bit / 128 bit WEP, WPA-PSK / WPA2-PSK, and WPS PBC
Wireless Data Rate		6Maximum up to 150 Mbps IEEE 802.11b 1 / 2 / 5.5 / 11Mbps IEEE 802.11g 6 / 9 / 12 / 18 / 24 / 36 / 48 / 54Mbps IEEE 802.11n 20MHz 14 / 29 / 43 / 58 / 87 / 116 / 130 / 144Mbps IEEE 802.11n 40MHz 30 / 60 / 90 / 120 / 150Mbps
Software		
Protocols/Features		NAT supports PAT and multimedia applications NAT, Static Routing, and RIPv1/2 Transparent Bridging Dynamic Domain Name System (DDNS) SNTP DNS relay and IGMP proxy DMZ and Virtual Server Quality of Service (QoS) for Traffic Prioritization TR-069 Ready UPnP

Anchor Data Systems (NI) Ltd

Tel: 028 9074 0315

www.AnchorData.co.uk
enquiries@AnchorData.co.uk

Security	PPP over PAP (Password Authentication Protocol, RFC1334) PPP over CHAP (Challenge Authentication Protocol, RFC1994) DoS Protection Access Control ACL (Access Control) IP/MAC /Application/URL Filter Stateful Packet Inspection (SPI) Firewall Password protection for system management
VPN	VPN pass through PPTP VPN IPsec VPN
Management	Web-Based configuration Embedded Telnet server for remote and local management Firmware upgraded and configuration data upload/download via WEB SNMP v1/v2 MIB supported Support DHCP Server/Client/Relay Built-in Diagnostic tool and IP Ping TR-069
Environment Specifications	
Dimension (W x D x H)	176 x 124 x 35 mm
Power	12V DC, 0.8A
Operating Environment	Operating temperature: 0 ~ 50 Degree C Storage temperature: -10 ~ 70 Degree C Humidity: 10 ~ 95% non-condensing
Emission	FCC, CE

ORDERING INFORMATION

ADN-4100	802.11n Wireless ADSL 2/2+ Router, Annex A
-----------------	--

Anchor Data Systems (NI) Ltd
 Unit 36 North City Business Centre
 Duncairn Gardens, Belfast, BT15 2GG
 Tel: 028 9074 0315
www.AnchorData.co.uk
enquiries@AnchorData.co.uk